

Universal Social Protection for Resilient Recovery and Future Crisis Preparedness

Director of Poverty Alleviation and Community Empowerment
Ministry of National Development Planning

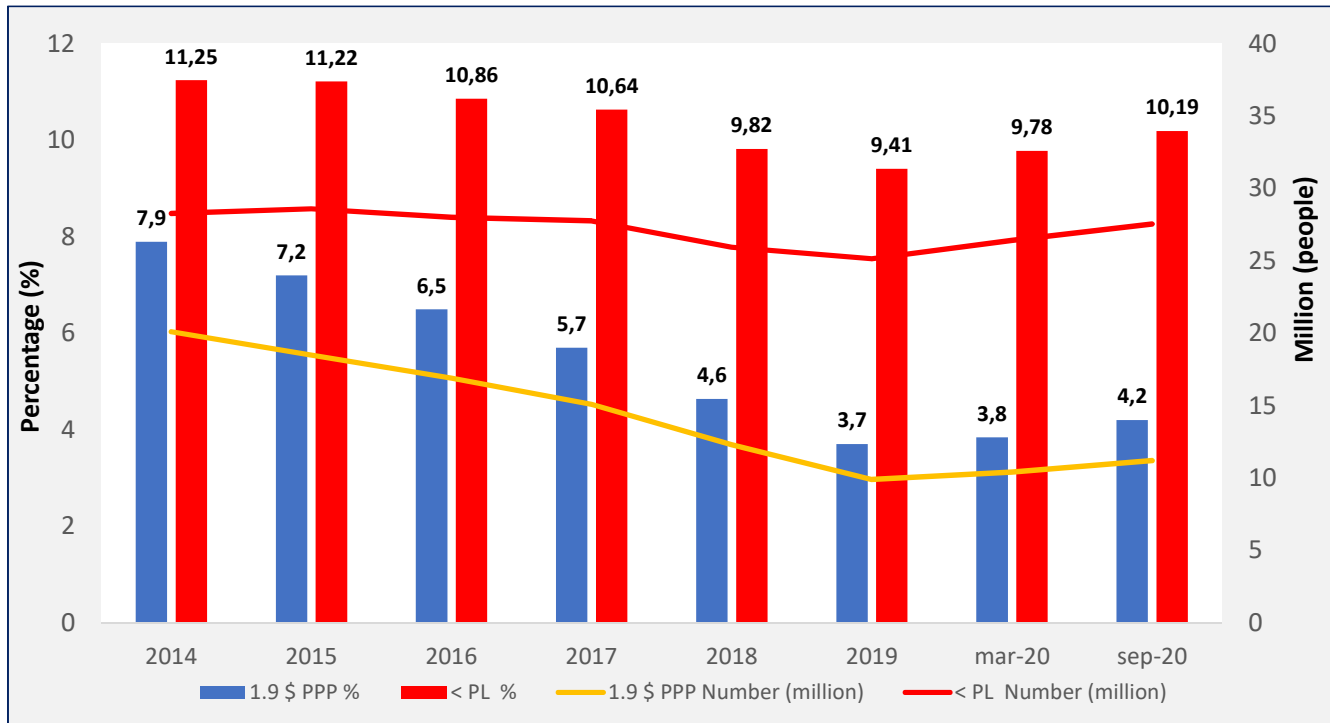
12 July 2021



**Kementerian PPN/
Bappenas**

Extreme Poverty Rises During Pandemic

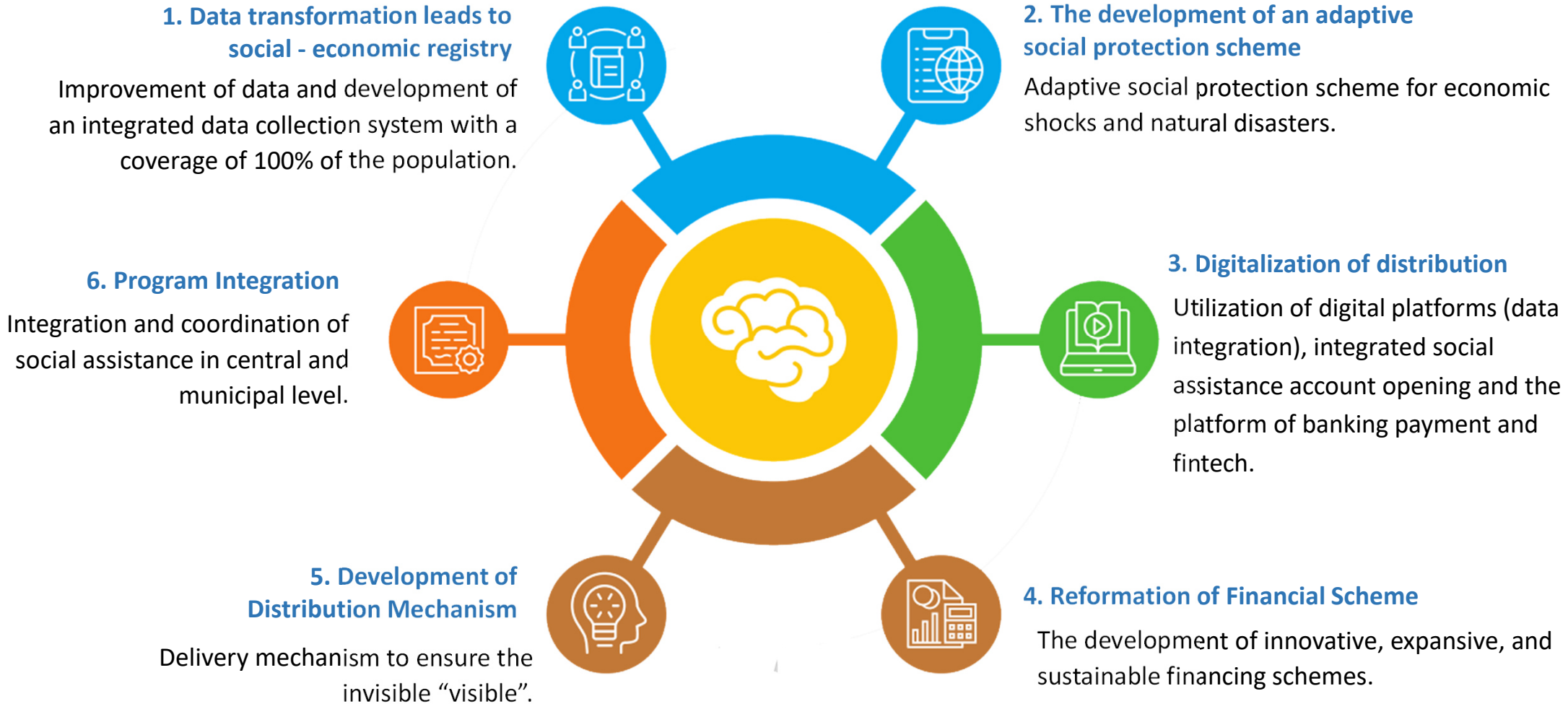
Trend of Poor and Extreme Poor in Indonesia, 2014-2020



Source: Statistics Indonesia, 2014-2020

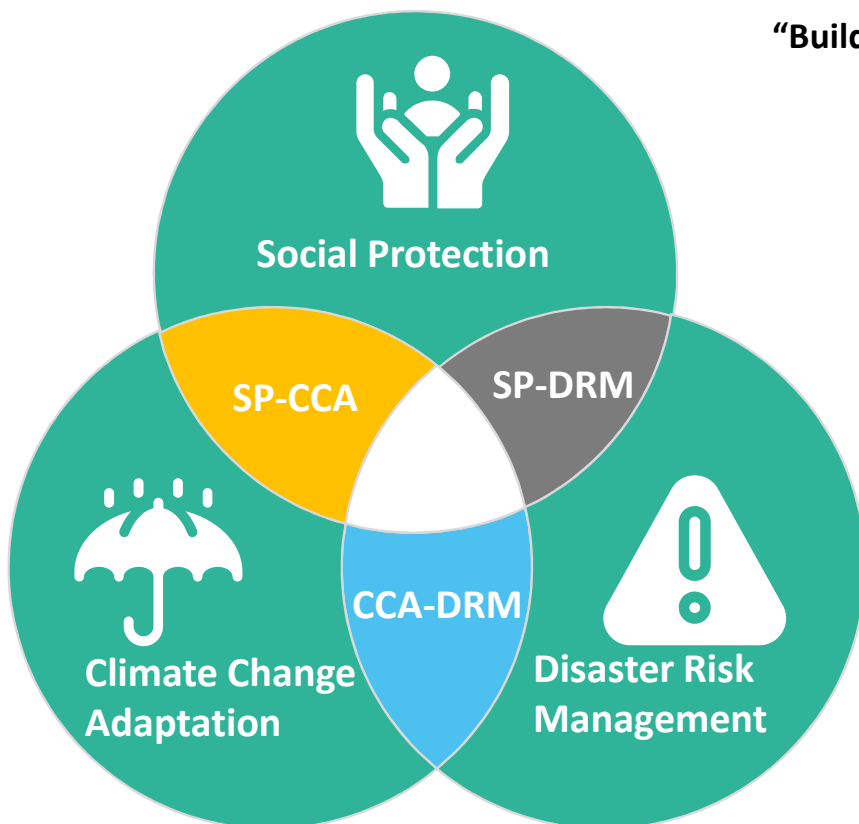
- In 2018, Indonesia has reached single digit poverty which become a strong base for achieving the SDGs target in 2030.
- Indonesia aims to achieve zero extreme poverty by the end of 2024, which means that we should eradicate extreme poor more than 2 million people per year on average.
- However, the outbreak of COVID-19 threatens Indonesia's entire gain in reducing poverty.

Reformation Agenda of Social Protection System



Conceptual Framework of Adaptive Social Protection

ASP Key Sectors



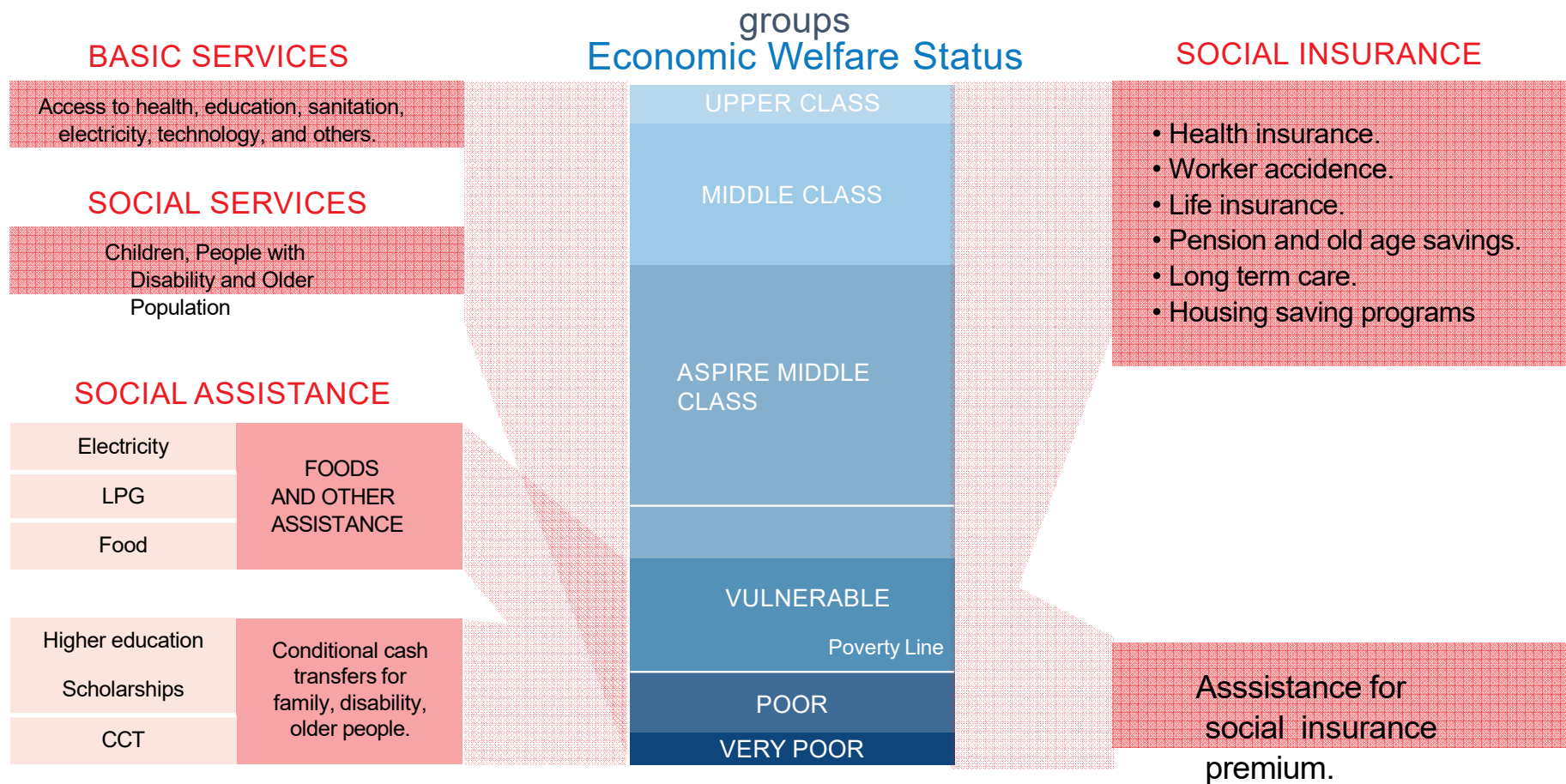
The Adaptive Social Protection should synergize three sectors: social protection, climate change adaptation, and disaster risk reduction !

“Building blocks” in developing ASP system based on global learning and best practice:

- 01 Government leadership:** Construct a roadmap or strategy document.
- 02 Institutional arrangements:** Establish continuous cross-sectoral coordination and capacity building.
- 03 Data and information:** Integrated data and information systems.
- 04 Programs and their delivery support:** integrated program of all three sectors (SP, DRM, CCA).
- 05 Finance:** Appropriate sustainable financing mechanism.

Integrating Multi-sector Approach in Social Protection Reform

Integrating multi-sector approach for reducing extreme poverty and outreaching the vulnerable



THANK YOU